



Archived resources

For further resources and
documentation please visit us:
www.cinos.net

▶ 55XS2B

55" Class (54.64" diagonal)



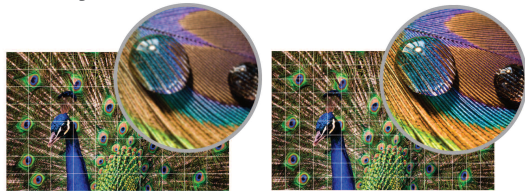
LG's new high brightness display, the 55XS2B is able to be installed inside the windows of retail shops in streets. Its low power consumption through M+ panel and fan-less noise reduction make it efficient exceedingly.



KEY FEATURES

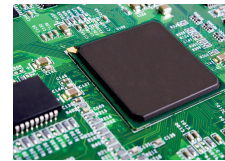
ADVANCED LOCAL DIMMING

The backlighting in specific areas of the screen can be controlled to increase contrast and provide a clearer image..

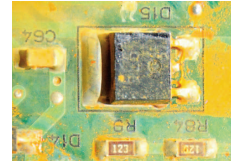


CONFORMAL COATING

Conformal coating helps protect against water, dust and iron powder deposits which accumulate in harsh environments, saving on expensive installation and added enclosure costs.



With Conformal Coating



Without Conformal Coating



LOW POWER CONSUMPTION BY M+

Excellent energy-efficiency and cost-savings with the M+ panel*, which decreases power consumption by 47% compared to an RGB panel.

MAX 495W (RGB)



Conventional



MAX 326W (M+)

Reduced by **47%**

COST EFFECTIVE HOUSING

High reliability under high operating temperatures reduces the material costs of the enclosure.

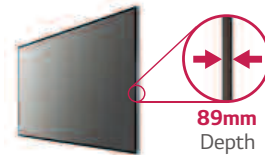


0°C-50°C
(32F-122F)



SLIM DESIGN

LG's monitors featuring a Direct-LED Backlight, have a stylishly slim design that fit perfectly into narrow spaces while ensuring high energy efficiency.



89mm
Depth



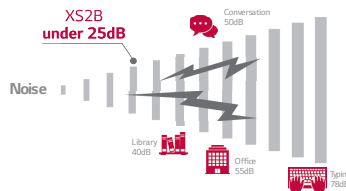
EASY MAINTENANCE WITH REAL TIME REMOTE MONITORING

When an alarm occurs, an e-mail notification is sent using SuperSign C or SI SW through the SNMP Protocol. In case of malfunctions or errors, real-time remote care is available



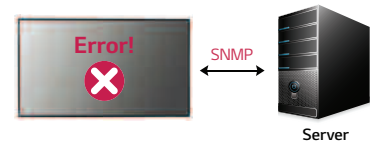
FAN-LESS NOISE REDUCTION

The 55XS2B is a perfect choice for in-window environment by removing cooling fan. Its noise level is under 25dB which runs as quietly as a recording studio (30dB).



SAVING SYSTEM LOG FILES

Supports log file backup to verify when the enclosure fails. Convenient for the user to check the log file history of when the enclosure encounters an error.



55XS2B - Semi-Outdoor Window Facing Fanless Display

with **SUPER SIGN™**
Digital Signage Solution

55XS2B

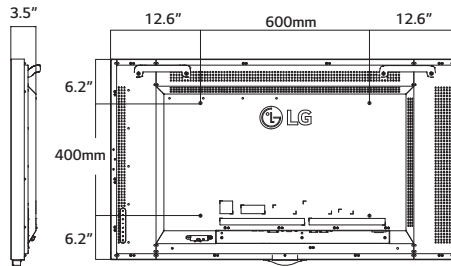
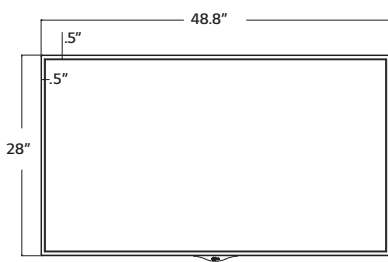
55" Class (54.6"/1387.9mm diagonal)



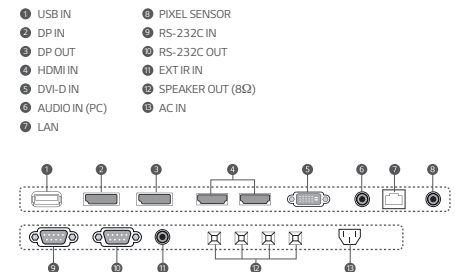
PANEL	Model name	55XS2B
	Screen Size	55" Class (54.6" measured diagonal)
	Panel Technology	IPS
	Aspect Ratio	16 : 9
	Native Resolution	1920 x 1080 (FHD)
	Pixels (H x V x 3)	6,220,800
	Brightness	Min: 2250cd/m ² , Typ: 2500cd/m ²
	Contrast Ratio	1,000:1
	Dynamic CR	500,000:1
	Color Gamut	72%
	Viewing Angle (H x V)	178 x 178
	Color Depth	16.7 Million
	Response Time Typ.	9ms (G to G BW)
	Surface Treatment	Hard coating (3H), Anti-reflection treatment of the front polarizer (Reflectance <2.5%) <2.5%)
	Life time	50,000 Hrs
	Orientation	Portrait & Landscape
VIDEO	Max Input Resolution	1920 x 1080@60Hz (HDMI, DVI-D, Display Port)
	H-Scanning Frequency	30 ~ 83kHz (HDMI, DVI-D, Display Port)
	V-Scanning Frequency	60Hz (HDMI, DVI-D, Display Port)
	Pixel Frequency	148.5MHz (HDMI, DVI-D, Display Port)
	Sync Compatability	Digital
	Video Input	HDMI1, HDMI2, DVI-D, Display Port
	Picture Mode	Vivid, Standard, APS, Cinema, Sports, Game, Expert1/2
	Color Temperature	Warm 50 ~ Cool 50
INPUT	HDMI	Yes (2)
	DP	Yes (1)
	DVI-D	Yes (1)
	Audio	Yes (1)
	RS232C	Yes (1)
	RJ45	Yes (1)
	IR Receiver	Yes (1)
	USB	Yes (1)
	HDTV Formats	HDMI : 720p, 1080i, 1080p
OUTPUT	Digital (with HDCP)	Yes (1)
	External Speaker Out	Yes (1, L/R)
	External Control	Yes (1)
SPECIAL FEATURES	Temperature Sensor	Yes
	Auto Brightness sensor	Yes
	Tile Mode	Yes
	Natural Mode @ Tile Mode	Yes
	Source Selection	DVI-D, HDMI, Display Port, USB
	Brightness/Contrast/Backlight	Yes
	Language (OSD)	English, French, German, Spanish, Italian, Korean, Chinese (Simplified), Chinese (Original), Portuguese (Brazil), Swedish, Finnish, Norwegian, Danish, Japanese, Russian, Portuguese (Europe), Dutch, Czech, Greek

SPECIAL FEATURES	Model name	55XS2B
	Advanced	Dynamic Contrast, Dynamic Color, Clear White, Skin Color, Noise Reduction, Digital Noise Reduction, Gamma, Black Level
	Time	Clock, On/Off Time, Power on Delay, Auto Off, Automatic Standby
	Information	Model/Type, Software Version, Serial Number, IP Address, Homepage
	Input Label	Yes(PC/DTV)
	Auto Power/Source Memory	Yes
	Key Lock	Yes
	DPM Select	Yes
	Energy Saving	Yes (Minimum, Medium, Maximum)
	Smart Energy Saving	Yes
	Power Indicator On/Off	Yes
	File Play with USB	Yes
	Internal Memory	16GB (System 4GB + Available 12GB)
	Wi-Fi	Dongle ready
ENVIRONMENT CONDITIONS	Operation Temperature	32°F to 113°F (w/o Direct Sunlight) 32°F to 95°F (Direct Sunlight)
	Operation Humidity	10 % to 80 %
	Power Supply	100-240V-, 50/60Hz
	Power Type	Built-In Power
POWER CONSUMPTION	Typ./Max	220W / 250W
	Smart Energy Saving	40-50% down of typical
	DPM	DVI-D, HDMI1W, DP:0.7W
	Power off	0.5W
AUDIO	Balance	Yes
	Audio Power	20W(10W x 2) for External Speaker
	Speaker On/Off	Yes
	Clear Voice II	Yes
	Sound Mode	Standard, News, Music, Cinema, Sport, Game
CERTIFICATION	Safety / EMC	UL / CB Scheme / FCC Class "A" / CE / KC /
SOFTWARE COMPATIBILITY	SuperSign w/Lite	Yes
	SuperSign C	Yes
CABINET	Bezel Color	Black
	Bezel Width	11.4mm (L/R), 13.5mm (T/D)
	WxHxD	48.8"x28.0"x3.5" (1238.4x712.4x89mm)
	Weight	56.4lbs (25.6kg)
	Carton (WxHxD)	53.8"x9.0"x31.5" (1366x228x800mm)
	Carton Weight	67.7lbs. (30.7kg)
	Handle	Yes (2ea)
	VESA™ Compatible	600mm x 400mm
ACCESSORIES	Accessory	Remote Controller (including battery 2ea), Power Cord, Manual, HDMI Cable
	Optional Accessory	Wall Mount (LSW630) ** Stand is not available
OTHER	UPC	TBD
WARRANTY		3-Year Limited Warranty Parts/Labor/Backlight Extended warranty options are also available

Dimensions



Rear Jack Panel



LG Electronics U.S.A., Inc.
HE B2B Division
2000 Millbrook Drive
Lincolnshire, IL 60069
Customer Service: 888.865.3026
www.LGolutions.com/support
Contact your LG Regional Sales Representative:
Channel: 800.897.8871
Hospitality: 800.228.1236
E-mail: info@LGolutions.com
LG_SPEC_55XS2B_091506_PR

All screen images are simulated. Dimensions and weights are approximate. Design, features and specifications subject to change without notice.

© Copyright 2015 LG Electronics USA, Inc. All Rights Reserved. "LG Life's Good" is a registered trademark of LG Corp. XD Engine is a registered trademark of LG Electronics, Inc. HealthView and EcoSmart are trademarks of LG Corp. ENERGY STAR is a registered trademark of the U.S. Environmental Protection Agency. Dolby and the double-D symbol are registered trademarks of Dolby Laboratories. SRS and the SRS symbol, TruSurround XT and WOW are trademarks or registered trademarks of SRS Labs, Inc. VESA is a trademark of Video Electronics Standards Association. All other product and brand names are trademarks or registered trademarks of their respective companies.

Printed in the USA August 2015

For further resources and
documentation please visit us:
www.cinos.net