



Archived resources

For further resources and
documentation please visit us:
www.cinos.net



VP-43xl

RS-232/RS-485/RS-422 Format Converter



The VP-43xl is a bidirectional converter between RS-232, RS-485, and RS-422 formats. Input data in any format is converted to the other two formats.

FEATURES

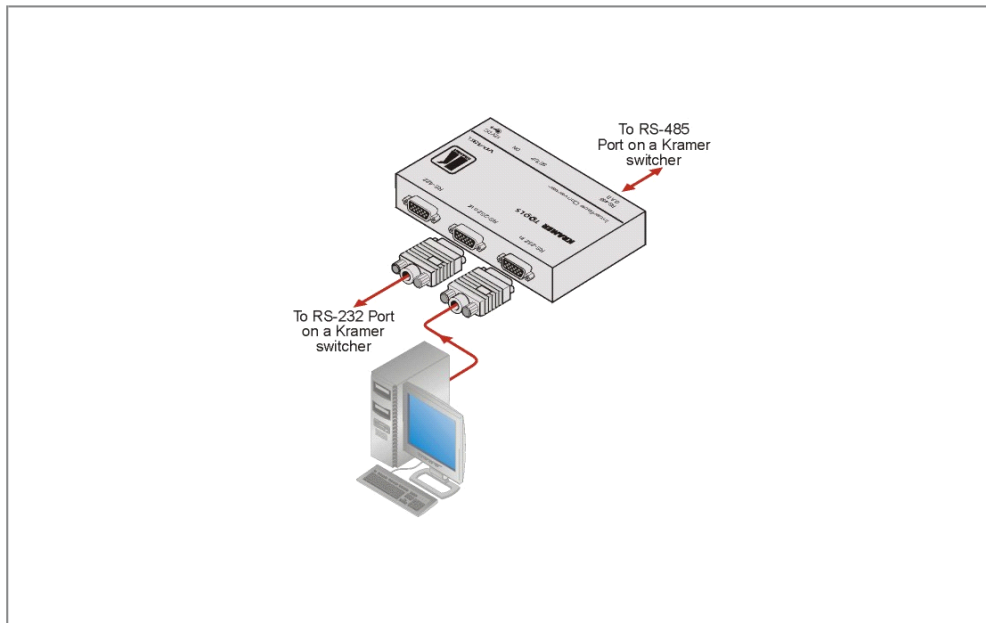
- **Ports** - RS-232, RS-485, and RS-422.
- **Format Conversion** - Any control message is converted to the other 2 formats at the same baud rate.
- **Daisy-Chaining** - Up to 32 units can be connected via RS-485.
- **Baud Rates** - 1200, 2400, 9600, 19200 and 38400.
- **Compact Kramer TOOLS™** - 3 units can be rack mounted side-by-side in a 1U rack space with the optional RK-3T rack adapter.



VP-43xl

TECHNICAL SPECIFICATIONS

INPUT/OUTPUT:	RS-232 IN on 9-pin D-sub (F), RS-232 OUT on 9-pin D-sub (M) compliant to TIA/EIA-232-F. RS-485 on 3 wires detachable terminal block compliant to TIA/EIA-485-A. RS-422 on 9-pin D-sub (F) compliant to TIA/EIA-422-B.
BAUD RATES:	1200, 2400, 9600, 19200, 38400.
FORMAT:	1 start bit, 8 data bits, 1 stop bit.
DISPLAY:	Power ON LED.
POWER CONSUMPTION:	12V DC, 80mA.
DIMENSIONS:	12cm x 7.5cm x 2.5cm (4.7" x 2.95" x 0.98") W, D, H.
WEIGHT:	0.3kg (0.67lbs) approx.
INCLUDED ACCESSORIES:	Power supply, mounting bracket.
OPTIONS:	RK-3T 19" rack adapter.



For further resources and
documentation please visit us:
www.cinos.net